

# CLAN DESTINY

No. 26

May 2001

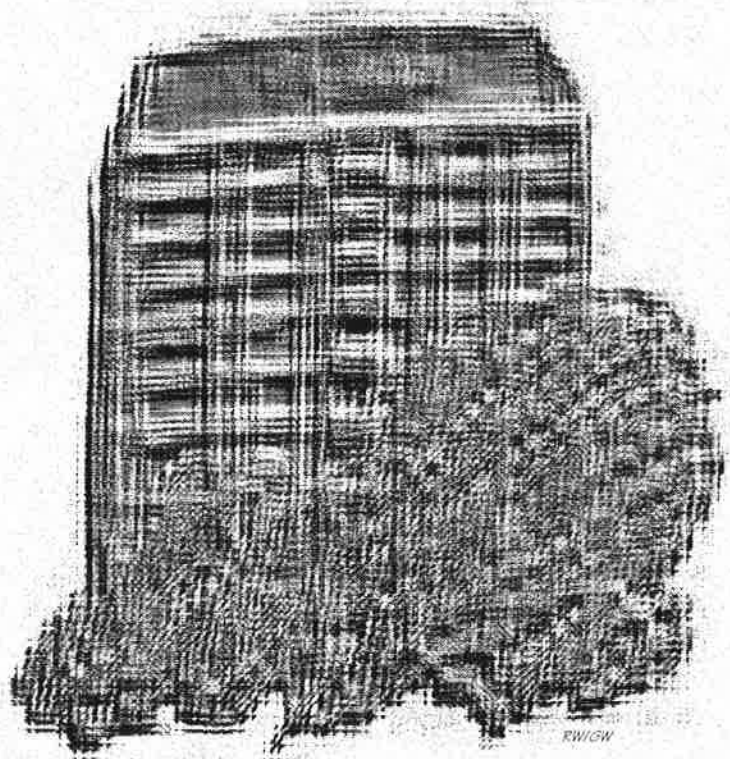
---

---

## *Inside*

---

- ◆ *Letter from the Chair: 1*
- ◆ *Department News: 2*
- ◆ *In and Around the Facilities: 3*
- ◆ *Faculty News: 5*
- ◆ *Chico Anthro Society: 5*
- ◆ *In and Around Chico: 6*
- ◆ *Departmental Scholarships: 7*
- ◆ *New Graduates: 8*
- ◆ *Alumni News: 9*



---

## **Letter from the Chair**

Dear Alumni and Current Anthropology Students:

The Department of Anthropology is making a few changes in the Clan Destiny. This newsletter was originated in 1973 by Valene Smith as a vehicle to keep in touch with our alumni and to show case their activities after graduating from CSU-Chico. For the first time with this issue Clan Destiny will be circulated not only to alumni but to our current undergraduates and graduates in our program. It will not only show case (some) of our alumni but it will also inform everyone what the department is currently undergoing and what faculty and staff have been doing – and more.

*Frank Bayham*  
*Chairman*

---

## ***How to Contact Us***

---

Office phone: 530-898-6192  
Fax: 530-898-6143  
E-mail: [anth@csuchico.edu](mailto:anth@csuchico.edu)  
Web site: [www.csuchico.edu/anth](http://www.csuchico.edu/anth)

---

## *Department News*

---

As of this writing the department is undergoing a new faculty search for an archaeologist/museum person and probably by the time you receive this newsletter an individual will have been hired.

During the first full week in April the department co-sponsored the President's Visiting Scholar Dr. Donald Grayson. Dr. Grayson, University of Washington, is an internationally recognized expert in zooarchaeology and the archaeological study of the interaction between humans and animals. He has done extensive field research on Pleistocene Native Americans of the Great Basin, the Donner Party, and the Neanderthals in Europe. He is the recipient of more than 20 research grants and has authored more than 100 publications. His books include The Desert's Past: A Natural Prehistory of the Great Basin and The Establishment of Human Antiquity. His public lecture (a huge success) was entitled "The Donner Party: Sex and Death on the Eastern Emigrant Trail". His other lectures were "Mammoths and Giant Sloths: The Extinction of North American Ice Age Mammals" at the Anth Forum and "Great Basin Mice and Neanderthal Diets" at the Biological Colloquium.

The Human ID/Physical Lab will be getting new and expanded facilities in Plumas Hall during the summer. We are very excited.

Dr. Alex King, hired August 2000, has been awarded a post-doctoral research fellowship with the Max Planck Institute for Social Anthropology in Halle, Germany for 2001-02. Just prior to going to press Dr. King learned that he had been awarded a National Endowment for the Humanities Summer Stipend in the amount of \$4500. Double congratulations.



### *Anthro House*

This is the first year of the re-established Anthropology House at Chico State. The house has 10 residents with a variety of majors and backgrounds. The house has been host to several events this year and the residents even go on some mini-vacations get together. Anth graduate student Carolyn Orbann is the House Coordinator. One of the traditional after-Forum get together was held at the Anthro House in the fall after Drs. Martinez and Heinz's joint Forum. A combination of students, faculty, and community members all came by to check out the new place. A fundraiser yard sale was held at the house for the forensic mini-conference. In the early spring the house sponsored a reception to honor the speakers who participated in the 3<sup>rd</sup> Annual Forensic Mini-conference. The speakers and students took the

opportunity to relax for a few hours before heading off to the AAFS meetings in Seattle the following day. The residents recently traveled to Auburn to stay at resident Wendell Peter's family for the weekend and to see a play in which his mother was participating. During spring break everyone decided to take a camping trip to the north coast staying at Patrick's Point National Park. They stayed for two nights; some used the days for hikes in the Redwood National Forest and others enjoyed the tide pools of Trinity Beach.

### *Departmental Goals and Needs*

The department has recently identified specific equipment goals.

- ◆ Ethnographic Lab: PC laptop, digital camcorder, digital still camera, and "turnkey" dedicated video editing system [PC or MAC]
- ◆ Museum: track lights and crowd control posts and ropes
- ◆ Physical Lab: Two portable excavation/recovery systems and plastic skeletons



## *In and Around the Facilities*

### Archaeology Laboratory

The Archaeological Research Program has grown both in funding and student involvement during the past several years due, in large part, to the guidance of Greg White, who assumed the duties of Arch Lab Supervisor January 1996. During the past 5 years the goals of the lab have changed from the preparing the lab to compete with other cultural resource management firms in the region to incorporating a greater Native American involvement in all aspects of resource management. The principal objective, however, of ARP providing both undergraduate and graduate students with practical experience and research opportunities has not changed. To fulfill this goal a large portion of each contract awarded has been set aside to finance students both in the lab and in the field. The dramatic increase in the size and number of contracts from \$50,000+ during White's first years here to over \$600,000 last year alone has simultaneously meant an increase in the lab's ability to accommodate and provide funding for more students. The experiences provided by the ARP have been invaluable to many students in their search for a post academic career. Those who have participated in the ARP have been employed by cultural resource management firms

throughout northern California and by government agencies.



*Chico State graduate students Alex deGeorgey and John Burge work with BLM archaeologists at Cache Creek in Lake County.*

### Physical/Human ID Lab

At the beginning of the fall semester, 5 graduate students, all of whom work in the Physical Lab, came together to begin plans for the Third Annual Forensic Mini-Conference. These individuals, Tamara Leher, Renee Kosalka, Mitch Keur, Ben Figura, and Carolyn Mauck, worked through the fall semester into February fundraising, writing proposals, corresponding with speakers, publicizing, and working on many other aspects of the conference. On February 18, 2001, the conference came together. From 9 AM to 4 PM, students, faculty, medical professionals, law enforcement, FBI, community members, and many others had the opportunity to

listen to Clark Davenport (Forensic Geophysicist), Steve Symes (Forensic Anthropologist), Norm Sauer (Forensic Anthropologist), Jerry Melbye (Forensic Anthropologist), Ian Hanson and Roland Wessling (both Ian and Roland worked with the International Crime Tribunal for Yugoslavia) speak on topics related to Forensic Anthropology, Forensic Archaeology, and Forensic Geology. The next day the guest speakers conducted a hands on workshop for the upper division graduate students. During this workshop students had the opportunity to handle and analyze skeletal material, use various geosensing equipment, and interact with the speakers. The conference was another wonderful success with well over 150 people in attendance throughout Sunday and Monday. The conference staff owes much thanks to those who supported the event.

Following the Mini-Conference, 8 graduate students left for Seattle to attend the American Academy of Forensic Sciences Meetings. The students who attended the AAFS conferences had the opportunity to hear lectures from a variety of speakers in various disciplines as well as interact with professionals in the field. Graduate students Eric Bartelink and Jason Weirsema presented a successful poster on the use of a Scanning Electron Microscope to examine cut marks.

In addition to the conference, the lab is currently working on a historical case from a turn of the century cemetery as well as a number of cases from Nevada and one from Tehama. The lab has kept

quite busy, whether it has been working on modern cases, historical cases, cremations, or processing animals. Many students have taken advantage of the opportunities that are available in the lab, as well as conducting research on such topics as cut marks, the use of scanning electron microscopes, burnt bone, and trauma. Currently the lab has 3 student interns as well as a number of volunteers who work on various and numerous projects in the lab.

### Museum of Anthropology

This semester, the Museum of Anthropology has welcomed many visitors, including numerous tours of school-aged children, to the newest exhibition, **Drumming in the New Millennium: Building Bridges Across Cultures**. This exhibition was created and installed by Museum Studies students in the fall of last year and is open for the public to enjoy through May 15, 2001.

The Museum has coordinated many outreach programs to go along with the current exhibit. Two West African dancers, Djibril Camara and Alain Zinsou, accompanied master drummer, Lansana Kouyate, who performed at the opening reception and at a second performance in February. Also in February, a master drummer from Ghana, S. Kwaku Daddy, sponsored by the Museum performed for the public on campus. Most recently, the Museum hosted a lecture, demonstration, and evening concert of Classical Northern Indian music at which the tabla and sitar were played by Tim White

and Tim Witter (instructors at the Ali Akbar College of Music in Marin). More drumming events are to come, including a visit from a Ute medicine man from the Native American Church.

On the first Saturday of each month this semester, the Museum has welcomed children for **Kids' Day** at the Museum. Children have enjoyed storytelling and crafts, as



well as a mini-seminar on how to build great-looking science fair displays using museum techniques. Soon, children will have the opportunity to make their own drums!

In addition to these events, the Museum presents a once-a-month Sunday evening lecture series, **World Explorations**, designed to explore interesting peoples and places from near and far. Our speakers include Anthropology professors Valene Smith, Charlie

Urbanowicz, Stacy Schaefer, and Alex King.

The Museum is beginning to prepare for the 17th annual photography competition and exhibition, **American Visions**, to be held in the fall. Last year's was a great success. And the Museum recently established a newsletter, **Museum Musings**, written by students in the Museum Studies program.

Aly Wood, the former Curator, has a new job managing the collections at the Placer County Museums. Graduate student, Laurie Egan, is the new Curator. The current staff includes graduate students Chris Ruiz and Elizabeth Kallenbach, and undergraduate/museum studies certificate student, Regina Palm. Volunteers include Celeste Jackson, David Hedley, and Selda Arnoff. With the kind and generous support of the members of the Museum Alliance, the Museum staff is able to bring exciting and culturally enriching activities and events to the Chico community. The Museum is always looking to expand its membership. Alliance members enjoy many privileges with their museum membership. Some of these benefits include: invitations to private openings and other Museum events; discounts at Museum events and a 20% discount at the Museum Store; offers for trips and tours; a gold-embossed membership card; and a wonderful chance to give back to the community. Call the Museum at 530-898-5397 if you are interested in becoming a member.



---

## *Faculty News*

---

### **Ginger Farrer (1985)**

- 1999 Article "The Anthropologist and the Shaman" published in *Acta Americana* (a Swedish journal). Various smaller pieces.
- 1999- Funded research on  
2000 ethnomedicine at White River, AZ Apache healer
- 1999- Master Teacher  
2001
- 2002 Book chapter in Philip R. DeVita's *Stumbling Toward Truth: Anthropologists at Work*, published by Waveland (her chapter on Apaches, of course).
- Acquired Sheba, a black standard poodle, who is a medical assist dog and who has allowed Ginger to give up her cane.
- 2000- Biography in Who's Who in the World  
2001
- 2003 Looking forward to FERP (Faculty Early Retirement Program) status in Fall.

### **Carolyn Brown Heinz (1997)**

Carolyn's principal research effort these days is to complete the manuscript *Inscriptions of Self: Genealogies and Ritual Art in a North Indian Kingdom*. She spent last summer working at the Oriental and India Office Collections at the British Library in London researching British holdings on 19th and 20th century Darbhanga Raj. Last November she read a paper at the national meetings of the AAA that will become part of the book: "Sita Was a Mithila Girl":

Narratives of Text and Self" in a symposium on Gendered Subjectivities, and is submitting an abstract for a paper to be presented next year examining the colonial constructions of duty, self, and other based on materials from the British Library. She vows to stay in town all summer to write but is particularly looking forward to her sabbatical in Spring 2002 for final completion of the book.

### **Keith Johnson (1963)**

This fall semester will be his last teaching semester. He and wife Karen still volunteer at the Butte County Historical Society in Oroville, and he opened the new BCHS Museum there last year and continues to oversee

*[The year after the name represents the year the individual came to CSU-Chico.]*

---

## *Chico Anthropological Society*

---

CAS has been meeting monthly, held several fundraisers, purchased a small refrigerator (housed in the Ethno Lab, Butte 305) to hold their sodas and bottled water for sale, and are getting a banner made to display during their events.

Nine graduate students attended the American Academy of Forensic Sciences meeting held in March in Seattle. Two of those students (Jason Wiersema and Eric Bartelink) presented a poster on some of their current research. Another large contingent of students attended the Society for

California Archaeology meetings also in March held in Modesto. Eric Bartelink, Robin Cordero, Alex DeGeorgey, Ewin Dwyer, and Maggie Trumbly presented papers. In addition, Eric,

Jason, Robin, and former graduate student Kim Holanda (MA 1998) along with Frank Bayham taught a class on the field identification of human vs. non-human bone.

---

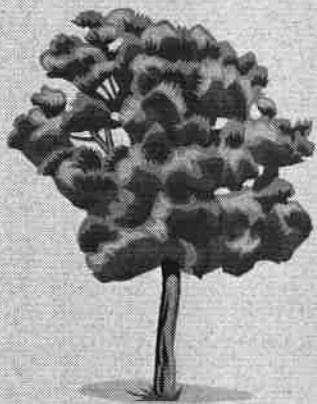
## *In and Around Chico News*

---

In February Chico had rolling black outs – and on one Sunday came along 50 mph winds that knocked out power to thousands of homes in Butte County for over 12 hours for most. The city and especially the campus looked like a war zone with fallen leaves, branches, and whole trees.

The campus lost an 80 foot 100 year old American linden tree (valued at over \$12,000) which had been growing in front of Laxson Auditorium.

Downtown Chico is losing Tower Books to expand their Record section and Sundance Records has folded. In-N-Out Burger still draws lines of cars. Lowe's is being built.



the research, design and installation of new displays. In addition, he is in charge of the Historical Society's archives. In February, he and Karen traveled on an Elderhostel trip to the World Heritage archaeological site of Paquime in Casas Grandes, Mexico. They will assist Valene with a tour to Paquime and other Chaco Meridian sites in May.

Keith flew to San Diego in April for a reunion with 4 of our former students from the 70s and 80s. His old betting buddy Dennis Mertz (MA 1982) and his family came from Maryland. Julia George Borovay (BA 1976, MA 1981) who lives in Redondo Beach organized the party. She received her Ph.D from UCLA in 1993 and works in the public health/ethnography field. Her physician husband, Michael, and 3 daughters came too. Tom Wittman (MA 1982) works for the FAA in San Diego and is a weatherman for the international airport there. Rich Olson (BA 1974) lives at Lake Arrowhead and is an archaeologist for Cal-Trans. They had a great time Keith reports, some of these people he hadn't seen for 20 years!

### **Bill Loker (1996)**

Bill continues to grind away, teaching 4 classes a semester, including 2 sections of ANTH 285, Formal Methods, the class every anthro major loves to hate! Bill is working on a book on his research in the El Cajon region of Honduras and is hoping to sell the rights as a major motion picture to Steven Spielberg. Spielberg is currently auditioning for the lead roles with Brad Pitt slated as the campesino victim and Jack Nicholson as the evil dam builder. Loker's role (Noble Anthropologist and Absent Minded Professor) is up for grabs though it is rumored that Arnold Schwarznegger, Harrison Ford and Britney Spears are all interested in the role. Loker will be on sabbatical in Fall '01, starting a new research project in Honduras, this time centered on the use of natural and unnatural resources in the Copan Valley. The Copan Valley is slated to be the site of the next episode of the Survivor series, as well as in the running for an XFL franchise. Ya'll come down and visit.

### **Charlie Urbanowicz (1973)**

Charlie reports that he and his wife Sadie still enjoy being the grandparents of two wonderful children and this June they are all off to LEGOLAND in Carlsbad, CA. (LEGOs aren't just for kids!) In July 2000, Charlie and Sadie took a once-in-a-lifetime 17-day trip to Machu Picchu, Peru, as well as the Galápagos Islands, Ecuador. It is fun to travel and see places that one "lectures" about and then bring that perspective back into the classroom. An interesting part of the Galápagos portion was sailing on a 184-foot schooner for 7 days! A couple of public presentations have been made and the most recent one, with visuals, was for the Museum of Anthropology's World Exploration Series: have a look at <http://www.csuchico.edu/~curban/WorldExplorationSpring2001.html>. Charlie continues to teach but he is thinking about retiring (or semi-retiring if, what is known as **FERP**, or Faculty Early Retirement Program still exists). He

has a book in mind (about Darwin!) and a few other projects. In November of 2000 he presented a paper at the American Anthropological Association meetings in San Francisco entitled "Teaching As Theatre" and you can check that out, if you wish, at: <http://www.csuchico.edu/~curban/Darwin2000.html>. Charlie still keeps busy and thinking about the future.

### Retired Faculty

**Tom Johnson** (1970-1994) Santa Rosa, Tom@winery.cc,

Tom has been taking classes on wine sales and marketing at Santa Rosa JC. He plans to move on to marketing classes at Sonoma State next year. Work on the winery is ahead of schedule. The production facility should be complete by the time this is received, so they can move out of rented facilities. Their first release of Chardonnay and Sauvignon blanc is available in California, New York, and Washington, DC. They will be adding more states and more varieties after their April bottling. The tasting room should be open to the public sometime in late summer or early fall. Tom is "looking forward to seeing all the Anthros in Healdsburg". Roshambo Winery is at 3000 Westside Road, about 3 miles SW of downtown and the web site is [www.winery.cc](http://www.winery.cc).

**Valene Smith** (1967-1998) Chico, vsmith@csuchico.edu

Valene retired from teaching but not research, renounced her long-time motto, "Learn by Doing, Teach by Being" and adopted the wise words of St. Augustine: "The World is a Book; she who stays Home reads only one Page". Valene still has many chapters to read - and in 2000 they included the "totally silent" Namib Desert and Skeleton Coast, and the endless uninhabited plains of Mongolia. Her article, "Space Tourism: the 21st Century Frontier" was published in late 2000, just ahead of the first "space tourist" (billionaire TITO) who will be the first "paying guest" at the International Space Station in April 2001 on a Soyuz shuttle. Reprints of the article are available for the asking: vsmith@csuchico.edu. And she truly misses the students but not the sometimes very difficult decisions: grades on papers and final semester grades.

### Staff

**Laurie Egan** (2001)

Laurie became the newest Museum Curator this semester. She received her BA in Anthropology from UC Riverside June 1996.

**Tamara Leher** (2000)

Human ID/Physical Lab Supervisor since last summer received her BA May 1999 in Anthropology with a minor in Criminal Justice from the University of North Dakota.

## Departmental Scholarships

### Department of Anthropology Annual Fund

A general fund which can only be spent on instructional needs. This fund also accepts employer matching funds. We thank those alumni who have gotten their employers to contribute.

### Edna May Johnson Memorial Museum Scholarship

Is awarded annually to a deserving student in the museum studies program. Recipients are named on a plaque in the department office.

### Arthur C. Lehmann Field Work Fund

This fund will provide support specifically for seniors and graduate students to do field study.

### Connie Sweeney Museum Endowment

The Sweeney endowment was established a few years ago to benefit the Museum of Anthropology. Interest from this endowment is used each year to aid in the operation of the museum.

**Trudy Waldroop (1980)**

Trudy has been with the department since June (30<sup>th</sup> to be specific) 1980. Her travels last year took her to St. Paul, MN for Business and Professional Women where she met Maya Anglou. What an inspiration! Additional travels were up the hill to property in Chester during the summer. She went on Valene's 6+ LA area Museums during spring break. This summer she'll attend BPW's national convention in Portland, Oregon, and of course Chester as much as possible. She and her husband Dan were married 33 years in April. They are currently living in Chico in her mother-in-law's former house while they renovate their home in Orland.

This past year Trudy has served as Parliamentarian of her local, district, and state BPW organizations.

**Greg White (1996)**

This past January CSU-C's Sponsored Projects held it's annual dinner to honor and recognize individuals on campus who obtained a lot of grants and contracts during the past year. Our Greg White was one that was honored, he also received a plaque. He generated over \$600,000 in grants and contracts last year. Last year he and wife Rose had another son, Graham.

---

## *Returned/Missing Addresses*

---

The department had numerous returned undeliverable addresses/forward order expired for many alumni. If you have a current address for any of the following please send them to the department.

Heather Anderson  
 Mechelle Appel  
 David Bruestle  
 Caryn Carlone  
 Glenn Caruso  
 Jennifer Carter  
 Mari Conroy  
 Margaret Derr  
 Bill Dreyer and Judy  
 Al Farber  
 Devon Ford  
 Allyson Hallback  
 Turia Hodler  
 Robert H. Hull  
 Donne Jeffers

Kenneth Kambeitz  
 Pam Lee  
 Kristy Mathenia  
 Eddie Moravec  
 Heidi Obeneskey  
 Jeremiah Pemberton  
 Scott Pirtle  
 Alice Precht  
 Jamaica Ritcher  
 Cheryl Slankard Pearson  
 Margery Wallin  
 Brian Walsh  
 William G. White  
 Lynn M. Wilson  
 Rebecca Wright

---

## *New Graduates*

---

BA 1999-2000

Joseph E. Anderson, Mary Bailey (Magna Cum Laude), Kristina Bretthauer, Melissa Cafferata (Magna Cum Laude), Benjamin Cramer, William D. Carroll, Jennifer Eggertsen, Darci Givens, Katherine Gruenewald, Jenell Guzman, Peter Hanchett, S. Aisha Hill, Christopher Joaquin, Harriet Kramer (Cum Laude Fall 1999), Susan McPherson (Cum Laude and Anthropology Honor Student), Melinda Pacheco, Shirley Reaves, Kirsten Spall, Cynthia Vallor, and Adrienne Wright

MA 1999-2000

PILAKOWSKI, Michael J.  
 (With Distinction)

Censuses and Cemeteries in  
 Paleodemography: A Study of  
 Representational Authenticity

SHIAU, Ya-Jiuan  
 (Museum Studies Option)

The Effects of an International  
 Exhibition on Museum Visita-  
 tion in Taiwan

TAITE, Krislyn

Resource Intensification and  
 the Los Vaqueros  
 Archaeofauna: A Test of the  
 Distant Patch Hypothesis



---

## Alumni News

---

### 1960s

**Ruth Gardner Begell** (BA 1968) Vacaville, CA [begell@sonic.net](mailto:begell@sonic.net)

After nearly 16 years as Director of the Vacaville Museum, Ruth has “new” news about her professional life. She accepted the position of Director of the Charles M. Schultz Museum and Research Center in Santa Rosa which is currently under construction with a projected opening date of Spring 2002. This is the ultimate museum job – for her anyway. She was able to oversee the development of policies, staff, exhibitions, and programs. Ruth says, “I’m having a ball – even if it sometimes seems I’m working 24-7!” On the home front she’s had lots of changes too. Husband Rick, a firefighter, is looking at a summer retirement. Both children, Colin and Sasha will be graduating from college in 2001. And Ruth has two “adorable” grand-children. Rick’s son and his wife live in Vacaville so they get to see the grandchildren often. Ruth still lives in Vacaville and says she enjoys the commute through the wine country.



**Dave Doyel** (BA 1969, MA 1972) Scottsdale, AZ, [ddoyel@asu.edu](mailto:ddoyel@asu.edu)

Dave is a Consulting Archaeologist employed by URS Corporation. Relaxation last year included a great trip to Cabo San Lucas. He was able to visit with Frank Bayham in Philadelphia last spring and Dave looks forward to seeing Frank and other friends soon in the Big Easy (‘Nawlins). Several edited volumes are now off his shoulders (Hohokem and Chaco), but his first novel has yet to be published. Under personal comments Dave writes, “Archaeology can be a hard master, but overall I can’t imagine a better way to have spent the past 30 years. If it’s ‘in your blood’ you can’t get it out, so just ‘follow your bliss’ and enjoy the ride!”



*Dave Doyle with Dr. Mark Kowta and  
Dr. Frank Bayham.*

### 1970s

**Linda Boynton Arthur** (BA 1970) Honolulu, [larthur@hawaii.edu](mailto:larthur@hawaii.edu)

After CSU-Chico Linda received her MA and Ph.D. in Sociology from UC Davis. She received the Carnegie Foundation’s 2000 Hawaii Professor of the Year Award and promoted to Full Professor 2001 at UHawaii at Manoa. Last year her books were published: Religion, Dress and the Body, Berg Publishers, Oxford; Aloha Attire: Hawaiian Dress in the 20th Century, Schiffer Publications; and Undressing Religion, Berg Publishers, Oxford. Sons Brendan (24) and Joel (26) are on their own working in Ashland and Portland, Oregon. Husband Pete and Linda are enjoying getting his engineering business going on Maui and Oahu, with some work in California and Oregon. Personal comments: “I owe my success as an educator, in large part, to training received from Valene Smith, Jim Myers, Keith Johnson and Bev Chinas, without whose examples I would not be receiving teaching awards!”

**Mary Condon** (BA 1970) Olympia, WA, [fionac@aol.com](mailto:fionac@aol.com) or [fionac2@juno.com](mailto:fionac2@juno.com)

Mary reports that she is employed full time by Washington State Department of Revenue and works part-time doing research and artifact analysis in historic archaeology.

**Frederick Dreier** (BA 1970, MA 1978) Redding

Fred is still in education, but is currently the principal of Palo Alto High School in the bay area. Fred says, "It's a great school, well educated community, and a very progressive district. I'm lucky." As a result, he has had to modify the amount of time he spends in anthropology (very limited), but his anthropological interests are just as keen as ever. Give my best to everyone in the department and thank you.

**Barry Hewlett** (BA 1971, MA 1977) Philomath, OR

Barry had another lucky year – promoted to full professor at Washington SU; the first behavioral scientist to be invited by World Health Organization to participate in control efforts of Ugandan Ebola outbreak; published three book chapters for three different books; published an article in Current Anthropology that was the cover story in the July 1, 2000 issue of Science News; and #1 son graduated from high school. Barry enjoys his "work" more than ever.

**Lucy Sperlin** (was Skjelstad) (BA 1971, MA 1979) Chico, lucys@saber.net

Employer: Polk, part-time, Cooperative History Project (PCHP) a consortium of 4 libraries and 2 museums in Polk Co., Oregon, where she coordinates and trains for archival materials care, and for history file organization and retrieval. 'Product' will be a Pathfinder to Polk County History. Lucy is 'semi-retired' in Chico. She reports, "It's great to be back. As luck would have it, though, I was offered this grant project contract on the day I was loading the moving truck, so it has meant commuting to Oregon once a month. However, part of Chico is better than none at all, and I look forward to soon becoming involved again in museum, history and anthropology related projects in Chico and Butte County." Lucy returned to using her birth name a year ago, but feel free to use either name. She's still getting used to it herself. To all her old friends from the 60s and 70s: "Hey you guys, 'Mother Skjelstad' says get with it and send in those Clan Destiny sheets next year! It would be great to hear what you are doing and what's happening in your lives."

**John David Moore** (MA 1972) Quincy, CA, www.sugarpine@thegrid.net

John is a self-employed pilot (aircraft). John and his wife Judy have been owners/operators of Sugarpine Aviators since 1977 at Quincy, California. They offer flight instruction, aircraft charter and aircraft rental. He is an FAA Designated Pilot Examiner. In addition, they fly a forest products fire patrol as well as Reconnaissance and Air Attack for the US Forest Service and State of California. John has written two books recently which have done very well. They are "Family Centennial" and "I Must Fly!" There is more information regarding them and their flying business on their website at [www.thegrid.net/sugarpine](http://www.thegrid.net/sugarpine). John's personal special interests include Dan Zan Kodenkan JuJitsu. He is currently a Second Degree Brown Belt and is helping train his granddaughter who is a Third Degree Yellow Belt and learning fast! She is learning to fly too, of course.

**Gail Jenner** (BA 1973) Etna, CA, gforini@sisqtel.net

Gail is self-employed as a freelance writer and substitute teacher. She recently published her first historical novel, entitled ACROSS THE SWEET GRASS HILLS, with Creative Arts Book Co. of Berkeley, CA. It revolves around the little-known Blackfoot massacre, the Marias Massacre, in 1870. It should be available at any bookstore or can be ordered by contacting Gail at [gforini@sisqtel.net](mailto:gforini@sisqtel.net). She was just notified that she placed as a quarter-finalist in the FADE IN screenplay contest with AMARANTH, a story that takes place during the Depression in California. She is waiting for results from the next level of competition. Last December Gail resold four children's stories that were released in two children's story anthologies, DEVOTIONS FOR BOYS and DEVOTIONS FOR GIRLS by Tyndale.

**Susan Wood-McKean** (BA 1973) Boise, ID

Susan is a stay at home mom or “home facilitator” and volunteers in school activities for her 7 year old son. She’s showing him the outdoors of Idaho in the summers. Susan’s first loves are still hiking and backpacking and is now involving her son in these activities. She does some volunteering conservation work for Idaho Conservation League and some work on herbs and naturpathic medicine. The family tries to attend local Pow Wows and other anthropology conferences nearby at Boise State University. She has a nephew attending Chico State.

**John Nystrom** (BA 1974) Fairhope, AL

John is self-employed in “diversified consulting”. He and wife Mary Lou have semi-retired in “L.A.” – lower Alabama. They are living in Fairhope (Carmel South), on the gulf. They enjoy watching their three grandsons participate in all sports, mainly football where John believes (AL) is the land where football originated. John says, “When Valene Smith suggested a newsletter for alumni back in the early 70s I never thought that my idea for “Clan Destiny” as a title would sustain itself so long and so well; helps keep in touch!! I always said I would rather be lucky than good.”

**Elaine Brown** (BA 1976; MA 1980) Athens, GA, [perezbrown@mindspring.com](mailto:perezbrown@mindspring.com)

She reports that the Brown/Perez family moved from Atlanta to Athens, GA where Elaine’s husband (Carlos Perez) is now director of the Sustainable Agriculture and Natural Resource Management Program of UGA (an international multi-land grant university research program). Elaine continues environmental work in the Atlanta area and especially the building of a watershed alliance and green space preservation of critical wetlands. She is establishing new relationships in Athens toward contributing to advocacy and community environmental action. Daughter Sierra is 7 years old and enjoying her new school and living in a woodland.

**John Castrop** (BA 1976) Corning, CA [castrop3@inreach.com](mailto:castrop3@inreach.com)

John is a Production Supervisor with Norfield Industries. His accomplishments this past year: still married to Meg since April 13, 1974; raised a son who is graduating from Corning High School this June and is already enlisted in the Army; and they own 4 horses, one of which John rides on a regular basis, trails and gymkhana.

**Mary Williams Maniery** (BA 1976, MA 1980) Sacramento, [mlmaniery@aol.com](mailto:mlmaniery@aol.com)

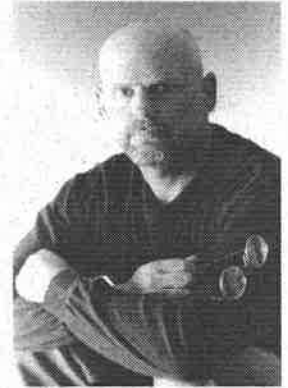
Mary and her husband just started their 19th year in business, PAR Environmental Services, Inc., and are still going strong doing a wide range of CRM and environmental planning work. “And to think this all started because Ronald Reagan was elected and the Forest Service jobs dried up!”, she says. Mary almost had an opportunity to team with Greg White and CSUC on a CalTrans job recently. They went in with another firm to bid on the job and didn’t get it, but she enjoyed seeing Greg at the interview and questioning him a bit about the department happenings. “It would have been something to work together doing CRM with the school that trained me in it! I do use the info center regularly, so have a sideways tie to the department still.” The highlight of Mary’s professional life since she last wrote was at the annual Society for California Archaeology meetings in Riverside in 2000. She was awarded the Mark Harrington Award for Conservation Archaeology for a project she had been involved in over the past three years in northwest California. Her firm has partnered with the Forest Service for a Pastport in Time project. They have been excavating an 1860s copper mining town northeast of Crescent City for the past three summers and have had over 300 volunteers work on the site. Her company and Mary volunteer half their time and half the salary. Mary says it felt great to be recognized by her peers for doing public interpretation and education work. Mary’s oldest son just entered high school and is an avid (and good) golfer. Her youngest is 10 and she plays on her school volleyball, track, and basketball teams at various times of the year. Between owning a business with 18 employees with her husband and the kid’s schedules, she keeps pretty busy. Mary also says, “It was really wonderful to read that Ruth Begell landed the Charles Schultz museum job. Keith, you must be proud! I still think of my CSUC days and you all fondly. I just don’t get up there as much as I’d like anymore.”

**William G. White** (BA 1977) Las Vegas, NV

Bill is the Senior Historical Archaeologist and a Principal Investigator with the Harry Reid Center for Environmental Studies, University of Nevada, Las Vegas. He completed archaeological mitigation of 12 railroad-related construction camps (ca. 1904-05) as part of federal land exchanges and an extensive rock art recording project on Air Force lands in southern Nevada. A board member of the Nevada Archaeological Association for the past 10 years, Bill served as editor of the *Nevada Archaeologist* for Y2K. He and wife Sally, a 6<sup>th</sup> grade science teacher, look forward to semi-retirement on their 5-acre orchard/ranch in Utah.

**Paul Reed** (BA 1978, MA 1981 from UC Davis), San Francisco, [paul@paulreed.com](mailto:paul@paulreed.com)

Paul's been doing pretty much the same things as in the last few years – writing books, traveling, and AIDS activism. His most recent novel just came out in December 2000 titled *Vertical Intercourse*. It's been getting great reviews, including a rave from Publishers Weekly. Travelling last year he discovered Miami Beach which Paul thought was just great. He stayed in South Beach with all its art deco architecture. He plans to go back very soon! His health remains stable – miraculously, considering he's been HIV-positive for 20 years and had full-blown AIDS for the past decade. Paul says, "It IS possible to live a long time with this disease. But keep praying!"

**Albert Flores** (BA 1979) Salinas, CA

Al is still single but enjoying his teaching at Cesar Chavez Elementary in Salinas. He still plays music and reads anthropological literature. Al now has a Class "A" license and can have equipment from excavating to concert equipment. He hopes to see "you all" in the near future, sometime before the "Cosmogenesis on 12/24/12 – our ancestors really did know much more about our universe than I thought!"

**1980s****Michael Dugas** (BA 1980, MA 1995) Chico, [mdugas@fs.fed.us](mailto:mdugas@fs.fed.us)

Mike recently changed archaeology positions from Lassen National Forest in Chester (where he worked for 18 years) to a position in Mendocino National Forest in Willows. He says that will save considerable time from travelling up to Chester, especially in the winter. His eldest son will graduate from Pleasant Valley High School in June and his other children are in the 2<sup>nd</sup> and 4<sup>th</sup> grades. "Time flies!!"

**Donald J. Storm** (1980 grad work) Davis, CA/Salmon, ID, [dstorm@fs.fed.us](mailto:dstorm@fs.fed.us)

In the summer of 1999 Salmon-Chalis National Forest hired Don to undertake a historical-architectural inventory of all agency owned administrative buildings within the Forest. This encompassed visiting, photographing, inspecting, and making notes on the style, construction, and condition of about 470 buildings in 90 locations spread over 4.3 million acres of forest and wilderness in the mountains of central Idaho. The majority of them were constructed during the 1930s by Civilian Conservation Corps crews and included over a dozen multi-building compounds, several dozen log cabins, 45 fire lookout towers, and 40 buildings often referred to as Standard Design Number 70 (also known to some as a one hole outhouse). During the summer of 2000 a major wildland fire episode resulted in over 400,000 acres burning on this Forest alone. Don is now very busy as the Forest Heritage staff tries to meet the CRM needs of a major fire rehab effort.

**Trudy Vaughan** (MA 1981, special major: Museum Studies) Redding, CA

[coyefox@c-zone.net](mailto:coyefox@c-zone.net)

Trudy says its hard to believe she's had her business (Coyote & Fox Enterprises) since 1983. She continues to be as busy or busier than she wants to be but has chosen to remain a small firm. Alum Polly Hamilton (BA 1999)

works for Trudy and is her only regular part-time employee. Trudy had a wide variety of CRM projects and last year was her busiest ever.

**Andy Yatsko** (MA 1981) La Mesa, CA, [yatsko.andy@ni.cnrsw.navy.mil](mailto:yatsko.andy@ni.cnrsw.navy.mil)

Since 1984 Andy has been an Archaeologist/Cultural Resources Program Manager for Natural Resources Office, Navy Region Southwest, San Diego, CA which covers the majority of Navy installations in CA, Nevada, and Arizona. Included in this scope of responsibilities are the rich archaeological resources on San Clemente Island. Andy earned his Ph.D. in Anthropology at UCLA, 2000. He began working on it in 1986, after sponsoring UCLA field schools at San Clemente Island. His studies continued through 13 years of parallel full-time employment and burgeoning family responsibilities until he finally filed his dissertation (Late Holocene Paleoclimatic Stress and Prehistoric Human Occupation on San Clemente Island) in January 2000. His marriage is first on any list of accomplishments. His wife, Coreen Chiswell, and he met at UCLA and were married in 1991. They have two children: son Noah is 6 and in kindergarten and daughter Claire is 3-1/2. They are at the center of their lives and a real joy.

**Linda Delorenzo** (BA 1982) Lawrence Harbor, NJ, [majordelo@webtv.net](mailto:majordelo@webtv.net)

Linda is still a teacher with New Brunswick Board of Education. She is currently researching Brain Based Education. She writes that she continues to marvel at the politics involved in elementary education. Gardening and raising three Chihuahua's keeps her grounded.

**Keith Light** (BA 1982) Salem, OR, [keith.d.light@state.or.us](mailto:keith.d.light@state.or.us)

Keith and wife Elaine recently relocated to Salem where they inhabit a "run down but stately" home that was built in 1910. Keith is employed as the local manager for a human services program that focuses on recruiting and supervising volunteers who provide services to people in need. Elaine is employed as an accountant for the City of Salem.

**Janet Ellner** (BA 1983) Chico, [jellner@aol.com](mailto:jellner@aol.com)

Janet teaches at Chico Unified's smallest school, Nord, along with another Anthropology alum (Kelly Smith Noble, BA 1989). Both happen to share the same birthdate. Janet was awarded North State Teacher of the Year 2000. She got married August 7, 1999. Janet has one daughter teaching in the Bay Area and another one in law school in New York City. "It was fun to see Valene on TV (for the Salvation Army) this Christmas season."

**Shapiro, Lisa** (MA 1986) and **Will** (MA 1990) Sacramento, [shapirolisa](mailto:shapirolisa) or [shapirowill@pacificlegacy.com](mailto:shapirowill@pacificlegacy.com)

Both Lisa and Will are employed doing Cultural Resource Management for Pacific Legacy, Inc. They continue to travel for work and for pleasure. They had a great trip to China a few years ago and made it to England last fall. Among the highlights of their work travel has been a road improvement project on the Island of Ta'u in American Samoa (same place Margaret Mead did her research). They found evidence of a battle which was mentioned in oral tradition, including several decapitated warriors. The Shapiro's write that they were sad to hear about Art Lehmann, although neither of them had classes with him but he always remembered their names and made a point to say hello and chat when they passed each other. "He had a great way of making us feel welcome and at home in the department."

**John K. Zancanella** (MA 1987) Prineville, OR, [zanc48@aol.com](mailto:zanc48@aol.com)

John still lives in Prineville and works for the BLM in archaeology. His focus these past few years has been on wild scenic river planning, land exchanges, a standardized cultural database and paleontology. He is also the program lead for cultural resources and paleontology. John is engaged to be remarried sometime this summer and is in the process of building a home in Bend, about 35 miles away which will mean a daily commute.

## 1990s

**Pam Nett Kruger** (BA 1991, MA 1996 CSU-N) Granada Hills, [babymks3@earthlink.net](mailto:babymks3@earthlink.net)

It has been another fulfilling year for Pam staying at home with two year old daughter, Ava. Their family will grow larger this year as she is expecting their second child in September. Husband Bob continues to work as a Marketing Manager at Vantico. The 3 of them went to Hawaii last August. They visited several cultural sites on Oahu and the “Big Island” along with a lot of beach time. They were fortunate enough to stay at a resort with the largest number of petroglyphs in the state. The interpretative presentation was excellent Pam says but she worried about visitor impact on the presentation. She was also amazed to see the feathered cloaks and headdresses of the Hawaiian chiefs on exhibit at the Bishop Museum. She had studied them only in photographs in grad school so she was quite excited to see these items in person. Her emphasis in grad school was Native Arts/Craft Production so we can just imagine her interest.



**Shona Nelson** (BA 1992) Livermore CA, [shona@ix.netcom.com](mailto:shona@ix.netcom.com)

Shona’s employer is The Clorox Company where she’s in Research and Product Development for Home Care SBU. A lot has happened in the past year. She moved out of her “horrible” apartment into a house, although she is still renting since no one can afford to buy a house in the Bay Area. It is hard to even rent a place in the bay area, especially if you have pets—it is all in who you know. Her landlord is the father of a friend of hers at work. She rents the house, with her cats and waterbed, for under market value! She has a front yard, back yard, and washer and dryer. Only drawback to the place is the fact that all the appliances are gas. She is spending a lot of time under blankets to stay warm so her bill won’t get too high.

Last year the El Cerrito High School Alumni awarded its first scholarships to ECHS graduating class. Shona was on the selection committee and helped present the awards to two students. She also helped decide on a plaque that is to be displayed at the school with the winners of the scholarship. She was awestruck at the caliber of the students at her old school. Despite bankruptcy and lack of funds, the school produces some exceptional students. Shona is looking forward to this year’s applicants and presenting again at their awards night.

Shona went to Disneyland last year with her sister and brother-in-law for 3 days. Believe it or not, on the Saturday they were there no one showed up until noon so they were able to go on every ride. But then after two they were doing the salmon going upstream bit. This was the only vacation she has taken in years in order to save up for this year – she’s going to Italy in September! Her mom rented an apartment in Florence near the Pitti Palace on the other side of the Arno from the tourist stuff. She will have over 20 vacation days to use. She intends to spend most of the time in Florence absorbing the culture, food and wine. She wants to have a “Frances Mayes experience” with a side trip to Pompeii. In the meantime, Shona is attempting to learn Italian.

Work has been “iffy” for Shona, she used to love her job but that was when she had a good boss. In February she applied to another position in the company working for someone who has a great reputation working well with her subordinates. Other work related news, she got a RMI last April and was not better until September. Now she has a mostly ergonomically correct work area. Since she is only 5 feet tall she has the right height desk for her - although many of her coworkers think they have been transported to munchkin land. Shona wrote her first Development Record for a formula that she developed. It will be the second DR which her name is first on the list, above a few Ph.D’s, and her first patent with her name first. She presented the work she did for her formula to her Marketing people, VP of Home Care and Research Fellows (Technical Managers) and did rather well. Hope-

fully soon she will be working on other Technical projects, give more presentations, and maybe get promoted. [The department thanks Shona and Clorox for their annual donation to our Annual Fund.]

**Evlyn Turner** (BA 1992) Paradise, CA

Evlyn, the perennial student (at 80+ years young she has a BA 1999 in Religious Studies and a minor in Spanish), is continuing her studies in Religious Studies. She attended her youngest daughter, Michele's graduation from Portland State U last August. Her "out of classroom time" is devoted to caring for trees and gardens at home. This summer she and her 17 year old granddaughter are planning a vacation in Europe.

**Scott Gingerich** (MA 1994) Paradise, CA, [goldntrout@yahoo.com](mailto:goldntrout@yahoo.com)

Scott has been teaching part-time at Butte College since 1994, and occasionally at CSU-C, and likes it. He started the Magic, Witchcraft, and Religion course at Butte which now accounts for nearly 1/3 of their anthro enrollment. Scott published an article in a national flyfishing magazine last August. He continues to go to Mexico every year where he has made an ethnographic video of the Mayo Indian Paskola dancers – and caught a sail fish on his fly rod last summer. His personal interests have been directed toward his 14 year old son, Jack, who has become an accomplished drummer. Jack is in the local "high school-wallet chain-punk" band Hazardous Material which has become "semi-pro" playing at birthday parties and a sports bar.

**Mark Winkler** (BA 1994) Redwood Valley, CA [markwinkler@usa.net](mailto:markwinkler@usa.net)

Mark is employed on campus at Mendocino College creating paid work experience and OJT contracts for students with local employers. His family wanted to stay in the area and he wasn't certain what to do for a job but ironically he is very happy working to help other people get a job. His students are all in the Cal-Works program (welfare-to-work) and for some of them the first "open door" makes all the difference. His family is "great". His son who attended the CSU-C preschool is now in high school! His 11 year old daughter writes a nice poem. Mark is also a self-taught whittler.

**Kristin Lundberg** (MA 1996) Lawrence, KS, [lundberg@ukans.edu](mailto:lundberg@ukans.edu)

Kristin is pursuing her Ph.D. in medical anthropology under the tutelage of Dr. John Jansen at the U of Kansas. She will complete her coursework in May and has initiated field statements. She intends to research the social reproduction of health in Lao women's working weaving groups in Laos beginning fieldwork at the end of 2002. Kristin began learning to read, write, speak, and understand the Lao language last summer at a 9-week intensive course (SEASSI) in Madison, WI with funding from a \$4500 FLAS. She is an editorial assistant for the SfAA's journal Human Organization edited at KU. She works part-time in nursing and is hoping for a NIH fellowship to fund the first of her doctoral work. Her daughter, Betsy, is in her second year at ASU majoring in voice and questioning what she should do with her life. They don't see each other often enough, says Kristin. She misses having a dog, a home where she can garden and fix things, and her dear friends in California. With the past winter she now knows what a Kansas winter is all about but thankfully has not experienced one tornado.

**Dalton L Allen** (BA 1997) Long Beach, CA, [dalton3c@excite.com](mailto:dalton3c@excite.com)

Presently Dalton is a school teacher for Downey Unified School District (LA county) and a graduate student at CSU-Long Beach in the Applied Anthropology Department. His focus is tourism. He is currently working on his thesis which will deal with resident's (tourism and non-tourism industry employees) attitudes towards tourism in a specific redevelopment area in a small Southern California surftown. Expected completion is August 2001. Since graduating from Chico State, Dalton has traveled to Europe and Central America. In 1997 he accompanied a non-profit organization known as The Global Service Corp to Costa Rica. The first two weeks they stayed in the high cloud-forest mountains in a small research station where they helped to categorize native flora and fauna, as well as repair and add to the station, electric lines and hydropower generator. The last two weeks were spent on a

cooperative farm known for its coffee and dairy products. Here they lived with a family and aided in daily activities, coffee crop maintenance, construction of a community building, and two Sunday soccer games. In 1998 he traveled to 8 European countries: England, France, Italy, Switzerland, Germany, Austria, Czech Rep., and Holland. Although a tourist himself, he also was deeply interested in international tourism and tourists, and especially those who hosted the hordes of tourists that never seemed to end. He always made it a point to talk with locals and residents whenever possible and to the other tourists. Lastly, in the summer of 2000 he had the chance to work with the Napa Valley Conference and Visitor's Bureau where he assisted in 'sales and marketing' of the valley. This was done primarily by selling "The Napa Valley" to travel agents and other events coordinators. He helped arrange a large-scale Familiarization Tour of the whole Napa Valley which 94 tourism industry professionals attended for 3 days. Dalton was able to spend time with tourists, get to know more about how tourism is run in one of the top tourism destinations in the world, and make many contacts in the tourism industry.

**Lori Field** (BA and Certificate in Museology 1997) Redwood City, CA [Nikitamisha1@cs.com](mailto:Nikitamisha1@cs.com)

Last December Lori was hired as a special education teacher with the San Mateo County Office of Education to teach children with severe disorders of language. She is also a tutor in American Sign Language for San Francisco State University students and attending SFSU with a MA in Museum Studies pending May 2001. Her thesis is entitled "Making Sense: Creating Sensory Exhibits and Activities for Special Needs Children." Lori traveled to Iceland in 1998 and explored the culture of the early Viking and contemporary Icelanders. Lori's personal comments include, "I miss dearly my time spent at Chico State, especially learning physical anthropology under the wings of Dr. Murad and Dr. Willey. I will forever miss Dr. Lehmann, an excellent professor and an exceptional person."

**Shannon Jung** (MA 1997) Tahoma, CA, [sjunggilbert@hotmail.com](mailto:sjunggilbert@hotmail.com)

Shannon recently moved from Missoula, MT back to CA. She is an Associate State Archaeologist with the Department of Parks and Recreation.

**Joseph Cavaletto** (BA 1998) Nipomo, CA, [Jchico3@aol.com](mailto:Jchico3@aol.com)

Joe is back on the farm farming with Cavaletto Bros. His younger sister, Susan, is an anthro major here at CSU-C.

**Jarith Kraft** (MA 1998) Red Bluff, CA [jarykra@juno.com](mailto:jarykra@juno.com)

Jary has just started doing a research project in the historic documents on the Chinese of south-east Butte County concentrating on those around Oroville for Bill Jones, Meriam Library Special Collections. Bill is planning to write a book. She has been married to Jack for 34 years and they have 3 children: Dana (38), a nurse; Joel (31) a computer specialist, and Edmund (27) a chemist. Both sons graduated from CSU-C. For recreation she and husband have traveled in the past couple of years so Jary can bowl in tournaments. She has bowled twice in Reno and Vista. This summer they will travel to Ft. Lauderdale to bowl in the nationals.

**Jeff Partain** (BA 1998) Vista, CA [jmpartain@aol.com](mailto:jmpartain@aol.com)

Jeff is currently teaching in his hometown of Vista at Olive Elementary. Last year his wife and he took a 3-week vacation to Mexico to explore more of the Yucatan and Quintana Roo. This year they will spend time in Baja for some kayaking and surfing. This year they will also become parents. Jeff says, "Hello to all who helped increase my intellect: Murad, Loker, Bayham, Heinz, Kowta, Urbanowicz, and Martinez. Hope everyone is happy and healthy. Cheers!"

**John Burge** (BA 1999) Chico, [john123@c-zone.net](mailto:john123@c-zone.net)

John is a full-time self-employed CPA and attending CSU-C working on his MA in Anthropology. His son turns 21 and his daughter 18 this year – "this means I've grown up and can leave the nest." John is looking forward to traveling a lot and doing lots of archaeology around the world. He wants to, "thank CSU-Chico for a great anthro-



poloical education. Thanks to all my instructors and student pals for your support, love and passion for anthropology.”

**Kuri Gill** (MA Museum Studies 1999), Brownsville, OR

Kuri was our Anthropology Museum’s Curator while a student here on campus. She is currently the Curator for the Mission Mill Museum. She attends several professional meetings and workshops with WMA, OMA, and AASLH. Kuri married Tom Well on September 16, 2000.

**Sara Keil** (MA Museum Studies 1999) South Lake Tahoe, [skeiltahoe@aol.com](mailto:skeiltahoe@aol.com)

Sara is employed by the Tahoe Heritage Foundation as the Program Director, Grant Writer, Restoration Project Manager, and Volunteer Coordinator (depending on the time of day). She moved to Tahoe right after completing her thesis having convinced the Heritage Foundation they needed an employee and so far it’s worked. In March she became the President of the Lake Tahoe Historical Society. In October she will become Mrs. Evan Larson.

## 2000

**Sally R. Evans** (BA 2000) Forestville, CA, [slyevans@yahoo.com](mailto:slyevans@yahoo.com)

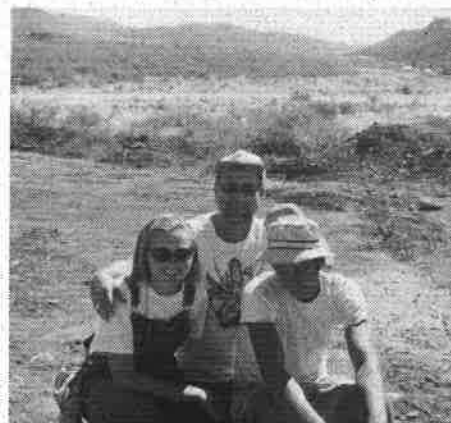
Sally says it took her a while to find a job in her interested field but she has been working for a year doing archaeology and GIS work out of Santa Rosa. She is very excited to have the opportunity to learn ArcView GIS and to be able to apply it to the field of archaeology. She is currently in the process of applying to graduate school here at CSU-C in order to achieve a MA in the application of ArcView GIS to the field of archaeology. In addition, Sally has been taking a few classes on traditional Native American skills though Miwok Archaeological Preserve of Marin (MADPM).

**Peter Hanchett** (BA 2000) Corning, CA, [P\\_hanchett@hotmail.com](mailto:P_hanchett@hotmail.com)

Peter is an archaeologist with Peak and Associates. He worked for 5 weeks for the Humboldt-Toyahee Forest doing a 640 acre survey at 9000 feet in the Sweetwater Range. He surveyed, mapped, and recorded 5 new archaeological sites and recorded numerous isolates. He did the work by himself with no supervision as a GS-7.



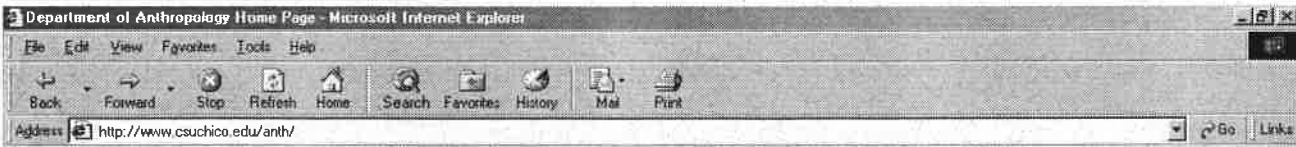
*Blossom Hamusek (MA '93, BA '87)  
and Dan McGann (BA '86).*



*Dave Doyle (MA '72, BA '69 ) with Lucia  
Ledwith (BA '96) and Eric Killian (BA '96) on  
1997 Miami Highway Project in Arizona.*



*Sean McKeawn (MA '73).*



DEPARTMENT OF ANTHROPOLOGY ETHNOGRAPHIC LAB ARCHAEOLOGY LAB MUSEUM WRITING LAB

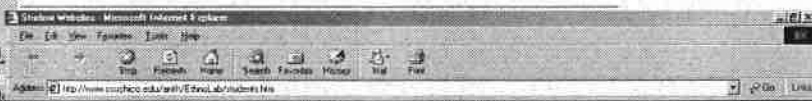
WELCOME TO  
**Department of Anthropology**  
 California State University, Chico

- [BA Program](#)
- [MA Program](#)
- [Course Offerings](#)
- [Class Schedules](#)
- [Syllabi](#)
- [Faculty and Staff](#)
- [Careers in Anthropology](#)
- [Certificate Programs & Advising:](#)
- [Certificates](#)
- [Certificate in Cultural Anthropology](#)
- [Certificate in Cultural Resource Management](#)
- [Certificate in Forensic Identification](#)
- [Certificate in Museology](#)
- [Forensic Anthropology:](#)
- [American Board of Forensic Anthropology](#)
- [Forensic Anthropology at CSU](#)



- Tehama Hall**  
Faculty Offices
- Butte Hall**  
Anthropology Office  
Butte 311  
Ethnographic Lab  
Butte 305  
Physical Anth. Lab  
Butte 301  
Faculty Offices
- Langdon Hall**  
Archaeology Lab  
Langdon 302  
Museum  
Langdon 301

These pages  
 and more links  
 are available through  
 our Anthropology  
 Department web site...



**Student sites**  
 Individual & Course Projects

**Cultural Images of Women** - Students over several semesters have produced web-based research projects on a variety of topics relating to women's status cross-culturally.

**Anth 239**

**Body, Self, and Emotion** - Student websites explore facets of American culture contributing to the construction of self known as "MPD".

**Anth 234**

**Summer Research, Independent Studies**

**Individual Projects**



California State University, Chico

**MUSEUM of ANTHROPOLOGY**

301 Langdon, Wacker Street, Chico (530) 896-2222  
 info@museum@csuchico.edu

- What's New
- Current Exhibit
- Upcoming Exhibits
- Museum Mission and Information
- The Gallery
- How to Contact Us

Recent news and press releases  
 "Hinds on Butte County History Site"  
 Train Exhibit  
 A brief description of the museum  
 Slide show (need a 4.0 browser to run)  
 Address, phone number, who we are

Home | What's New | Current Exhibit | Upcoming Exhibits | Museum Information | Gallery | How to Contact Us

CENTER FOR REGIONAL AND CONTINUING EDUCATION  
 CSU, CHICO

CALIFORNIA STATE UNIVERSITY, CHICO  
**ARCHAEOLOGICAL FIELD SCHOOLS**

**100ARCHAEOLOGY & FIELD ECOLOGY**  
 SUMMER RESEARCH TOUR

ANTH 279-11S, Zooarchaeology & Field Ecology - 3 units  
 Eagle Lake Biological Field Station, Lassen County, CA July 22 - August 12, 2001

Field-based introduction to identification techniques and interpreting procedures used in the analysis of faunal remains from archaeological sites. Ecological principles and the history of the Eagle Lake wetlands are explored through field observations. Potential paleoecological and paleobiological inferences are the emphasis. Lab component involves identification of vertebrate osteological remains and is focused on the reconstruction of protective subsistence strategies and human adaptation on the fringe of the Great Basin ecosystem. Enrollment is limited.  
 Application is required by Friday, May 18.

Course Fee: \$1,180 (actual fee may vary slightly depending on total enrolled summer units and state resident status). Space is limited.

Course Description  
 Details  
 Location  
 Lab Fees


Call 530-896-0100 or contact a.sullivan@csuchico.edu

Ethnographic Lab - Microsoft Internet Explorer

http://www.csuchico.edu/anth/ethnolab/

# Department of Anthropology

## ETHNOGRAPHIC LAB



**Welcome** to the Department of Anthropology's Ethnographic Lab. This is the Virtual Room of the real Ethnographic Lab located in Rmte 305.

Note: The lab is maintained by the volunteer labor of anthropology students. Occasionally the lab may not be open during these hours; we hope you will be patient (or agree to volunteer to help maintain hours convenient for students.) The lab is equipped with computers (Mac and PC) with internet access, print and slide scanners, color and laserjet printers, and a wide variety of software useful to anthropologists. Lab interns will assist you in using this equipment and run frequent tutorials on the equipment and software.

- Monday 8:00 to 5:00
- Tuesday 8:00 to 5:00
- Wednesday 8:00 to 5:00
- Thursday 8:00 to 5:00
- Friday 8:00 to 1:00

**Student Projects** Students in the department of anthropology engage in field research endeavors as a part of class activities and during summer vacations. The best of these are on display here.

**Ethnographic Archives** The Department of Anthropology is sponsoring an archive of documents based on field data collected by our own cultural anthropologists. These documents are for the use of our students and of visitors from the Web. See "On the Value of Ethnographic Archives in Teaching."

**Slide Archives** This resource will archive the large slide collections of the several members of the cultural anthropology faculty as a searchable database. A sample of the future site is available now.

**Web Resources for Anthropologists** A collection of links to local and Web sites which are useful to anthropologists.

**Chico Campus Culture Project** The cultural anthropology faculty is undertaking a rather open-ended and multi-stranded investigation of Chico campus culture conducted by students of anthropology under principal investigators Carolyn Heintz and Bill Loker. It makes use of ongoing courses to give students opportunity to plan, conduct, and write up their own research projects under the guidance of the principal investigators.

**Lectures & Presentations** PowerPoint and other lectures:  
 Neo-Paganism  
 Vodoun in Haiti  
 Institutional Power, Academic Freedom, and Human Risk in Research

**Kids' Page** Check out the links to anthropological information and activities appropriate to children and the public classroom.

Anthropological Archives - Microsoft Internet Explorer

http://www.csuchico.edu/anth/ethnolab/archives.htm

## The Department of Anthropology

### ETHNOGRAPHIC ARCHIVES

This resource is intended as a contribution to the growing process of information made possible by the WWW. This is a working site, with more materials being prepared each semester. We believe evidence of anthropology should have access to samples of the primary documents produced by anthropologists for the purpose of enriching their understanding of how knowledge is constructed through fieldwork.

**Ethnographic Notes, Documents, and Images of Chico Anthropologists**

**Ethnographic Archives, Des Moines, Idaho 1958, research conducted by Carolyn Brown Heintz** An Ethnographer of Butte County, for work of Dorothy Hill, website by Matt Buckley.

**The Month of Exorcisms, an Online Ethnography, photos, text, and notes by Carolyn Brown Heintz. Work conducted in North Idaho, Idaho in 1984, 1994, 1998.** The Heike Festival, research by Thomas Johnson, website by Jennifer Pickett.

**Fieldwork in Honduras, research materials by William Loker, website by Stephanie Demaris.** Mythoscripts on Davison, Charles Orlanowicz' work on the life of Charles Darwin.

**Quince and Mayan Traditions, research materials by Matthew Looper, website by Marc Roderer.**

**Alvaresani, research materials by Arthur C. Lehman, website by Mario M. Eskes.**

Ethnographic Slide Archives - Microsoft Internet Explorer

http://www.csuchico.edu/anth/ethnolab/slides.htm

## Ethnographic Archives



Enter the site

Microsoft System Restore - Ethnographic Lab

http://www.csuchico.edu/anth/FAPHL/

## Forensic Anthropology at California State

**Description of the Program:**


**The Faculty and Staff:**

**Academic Offerings:**

**Certificate in Forensic Identification:**

**The Facilities:**

**Links to Forensic Sites:**



**Description of the Forensic Program:**


CCCCP

Today finishes Tomorrow

# Chico Campus Culture Project

Yesterday Decided Today

Welcome to the Chico Campus Culture Project web site where yesterday's activities are being uncovered and understood for tomorrow's students.



Chico Main Bldg

The Chico Campus Culture Project began in 1998. In the fall of that year, Anthropology students from Chico State were asked to write two to three page essays contrasting the culture of Chico State to their previous culture area, whether that be...

---

Yes, I would like to assist the Department of Anthropology in their facility needs or with a student scholarship.  
Here's my donation:

\$500\_\_\_\_ \$200\_\_\_\_ \$100\_\_\_\_ \$50\_\_\_\_ \$25\_\_\_\_ Other \_\_\_\_\_

I would like my funds designated to:      Annual Fund \_\_\_\_\_  
   EM Johnson Museum Scholarship \_\_\_\_\_  
   A. Lehmann Fund \_\_\_\_\_  
   Sweeney Museum Endowment \_\_\_\_\_

Mail this page/sheet of paper and your check to: Department of Anthropology, Attention Trudy, CSU-Chico,  
Chico, CA 95929-0400.

---

*Thank you for your support !*

***Clan Destiny***

Department of Anthropology  
California State University, Chico  
Chico, CA                      95929-0400

Non-profit Org. U.S. Postage <b>Paid</b> Chico, CA Permit No. 217
---

ADDRESS CORRECTION REQUESTED